



ISO 9001
Certificate No. A 0858
ISO 14001
Certificate No. B 0110
OHSAS 18001
Certificate No. C 0082



www.dh.co.kr



▶▶ Cryogenic Heat Exchanger and System Engineering **Global Leader**

PCHE Printed Circuit Heat Exchanger

New Energy Transfer Solutions

Satisfactory performance in any environment

Various applications



DongHwa Entec

PCHE Printed Circuit Heat Exchanger

» Special Characteristic

Thermal Design

- Optimized thermal Design
High Heat Duty, Low Pressure Drop
- Micro Channel Design with Process
- Multi Stream Service
- Avoidance Design
with Icing phenomenon

Structural Design

- Pressure & Thermal Analysis
- Vibration, Pitching & Rolling
- Fatigue analysis

Code & Standards

- ASME Division I & II
- Class Society
- KGS(Korea Gas Safety Code)

Production Technology

- Diffusion Bonding Technology
Stainless steel : 3XX, 4XX
- Welding Technology
Core-Core Welding
Core-Header Welding
- Inspection Methods
HE Leak, Pressure Test...
NDE(PT, UT, MT...)

Maintenance and Repair Solution

- Performance Monitoring Methods
- Cleaning Methods
- Repair Procedure

Compact Size

Small Footprint, Small Weight

Excellent performance

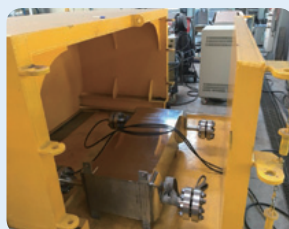
High Heat Duty, Low Pressure Drop

Long Service Life

High Durability, Easy Maintenance

Extreme Environments

Cryogenic Service, High Pressure,
High Temperature



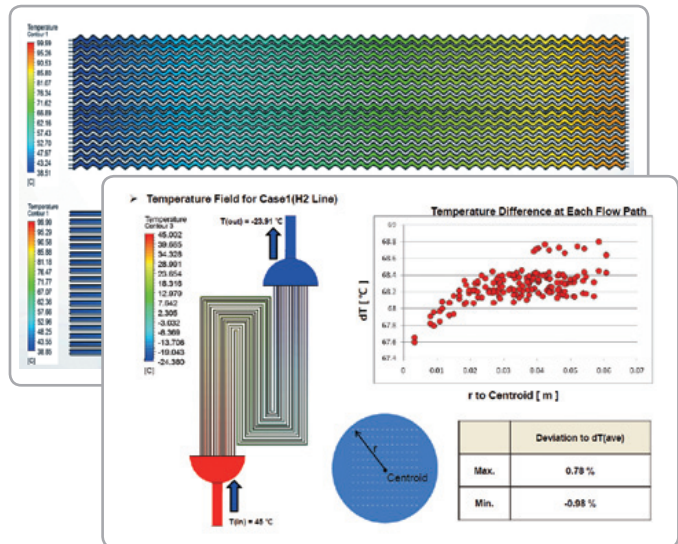
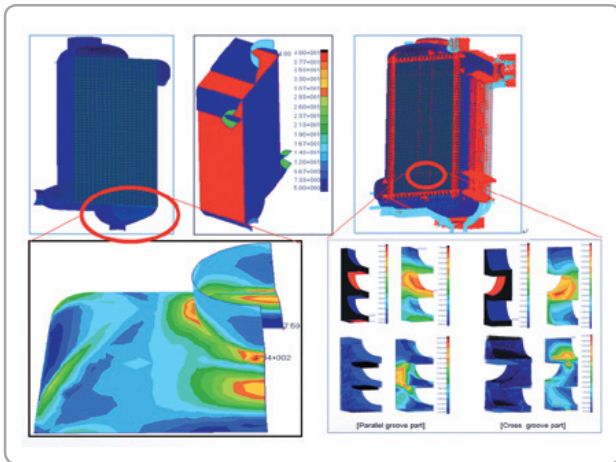
Max. Pressure Test : above. 4,000bar

Cyclic test : 0~1,000 bar, 1 CPM, 10,000 cycle

[PCHE Best Solution]

» Technology Developments

DHE has the thermal and flow analysis capability for Micro Channel and PCHE



Structural design technology is verified based on FEM technology, Stress & Thermal Deformation Vibration, Fatigue analysis.

» Best Solution

Oil&Gas Processing

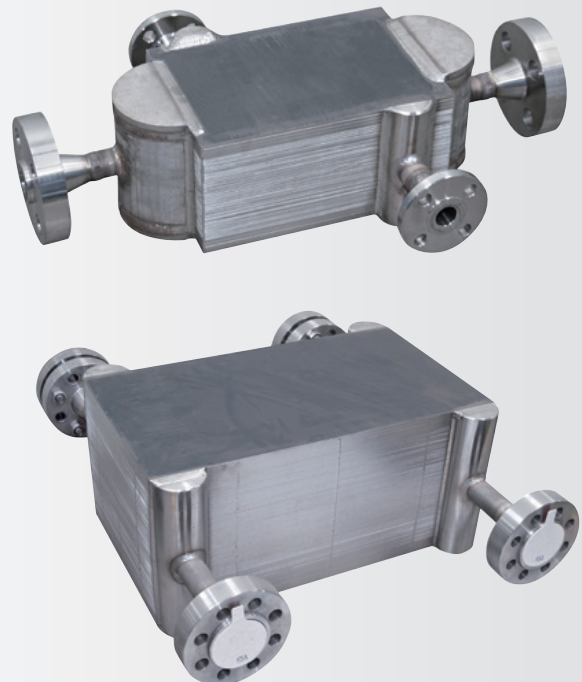
- Compressor Cooler
- High Pressure Cooler/Heater

Marine Application

- Fuel Gas Supply System
- Re-gasification, Re-liquefaction

Energy System

- Hydrogen Discharge Station
- Fuel Cell System





Head Office and Factory (Land Area: 15,574 m² / Building Area: 13,845 m²)



Hwajeon Office and Factory (Land Area: 20,127 m² / Building Area: 20,087 m²)



Energy, Environmental Tec. Lab. (Land Area: 4,465 m² / Building Area: 3,365 m²)



DongHwa Entec (Shanghai) Co., Ltd. (Land Area: 33,350 m² / Building Area: 18,457 m²)

DongHwa Entec

Donghwa Entec Co.,Ltd

Noksan Office and Factory

7, Noksansandan 261-ro, Gangseo-gu, Busan, Korea
T. +82-51-970-1000 F. +82-51-970-1001

Hwajeon Office and Factory

20, Hwajeonsandan 1-ro 63beon-gil, Gangseo-gu, Busan, Korea
T. +82-51-970-1100 F. +82-51-970-0710

Energy·Environmental Technology Laboratory

7, Gwahaksandan-ro 305beon-gil, Gangseo-gu, Busan, Korea
T. +82-51-970-0711 F. +82-51-970-0730

DongHwa Entec (Shanghai) Co., Ltd.

No.2508 Jiangshan Road Lingang New City Shanghai China 201308
TEL : +86 (0)21-5197-5001 FAX : +86 (0)21-5197-5005